

*Help build the future for
Gainsborough's House*

**BUY A
BRICK**

BUY A BRICK FOR NEW GALLERIES & A CRINKLE-CRANKLE WALL

With your support, we hope to use attractive handmade clay bricks from a local maker for the new galleries and a distinctive crinkle-crankle wall in the garden. The brick façade will offer a stunning addition to Sudbury's conservation area.

Gainsborough's House is undertaking a major capital project to establish a national centre for Gainsborough so more people can enjoy the special setting of the artist's childhood home and garden. The project aims to double the size of the museum and refurbish and re-display the historic buildings to show more of Gainsborough's art and to sustain and protect the museum for future generations.

A new wing will be built for three new exhibition spaces and a new creative learning studio with views over the Suffolk countryside. Designs for the exterior feature clay bricks from a local maker offering a stunning addition to Sudbury's conservation area.

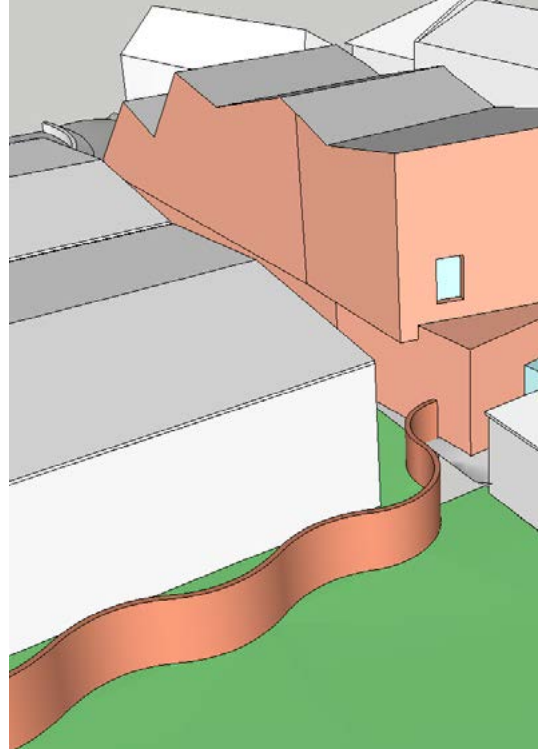
A distinctive crinkle-crankle wall will provide an attractive boundary for the garden, a favourite attraction with its giant 400-year-old Mulberry tree, alive when Gainsborough was a boy.

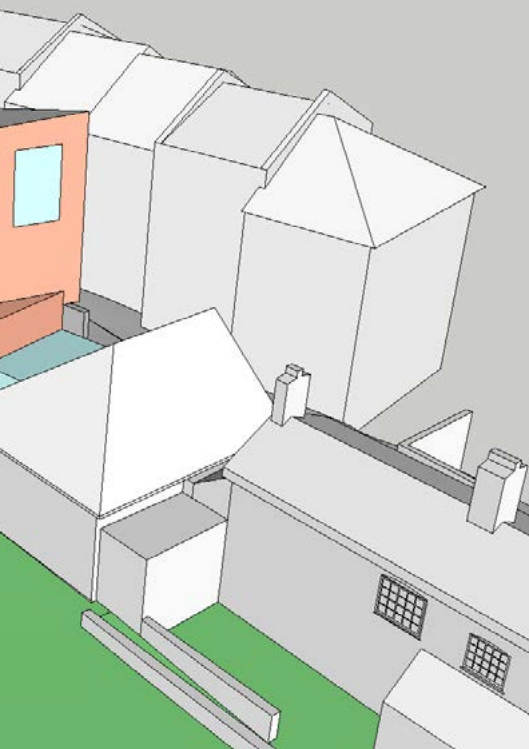
Please consider sponsoring a brick to help to make this happen.

By donating £20 a brick, you will help to make this possible. The project will use thousands of bricks, so every brick sponsored will help. Everyone who donates will be thanked in our special commemorative book.

“Sponsoring bricks is a great way to get involved. These bricks are a local material, so we are supporting Suffolk industry as well helping to build a beautiful feature for the site. Do join in and perhaps sponsor a brick for each member of your family.”

Mark Bills, Director, Gainsborough's House.





A NATIONAL CENTRE FOR GAINSBOROUGH

We hope to begin the three-year expansion project in late 2018. The bricks would form an important feature of this. By building the only major exhibition space in Suffolk, the museum will be able to show exhibitions of international appeal to reach a wider audience, create a more sustainable museum and have a transformative impact on the surrounding market town. The project should enable more artists to create and exhibit their art on site and offer many more opportunities for creative learning in a new studio. We are still raising funds to make this project possible and need your support.

“I’ve bought a brick for each member of my family. It’s a great way for us all to be involved in this exciting project.”

Christy Stewart-Smith, Trustee,
Gainsborough’s House.





HOW YOU CAN GET INVOLVED

If you would like to sponsor a brick/s, or perhaps donate one for each member of your family or for friends, please complete the attached donation form. Please help us as generously as you can.

Thank you for your support.

“When we heard about the fantastic plans that Gainsborough’s House has for building a national centre, we thought buying bricks would be a fabulous way for us to share our pride in being named after such a great artist.”

Sarah Cosham, Asst Head of Gainsborough House, The Stanway School.

BULMER BRICKS

Taking its name from a village near Sudbury, Bulmer Brick & Tile Co Ltd has been operating since 1936. Bulmer bricks are made from clay seams dug almost continuously since Tudor times. Traditional methods are used to make, dry and fire bricks in a coal burning, down draught kiln. This helps create the distinctive finish that blends so well with the originals. Bulmers supplied all the brick arches for the award-winning refurbishment at St Pancras Station and Hampton Court Palace.



YOUR DETAILS

Title

First Name

Surname

Home Address

Postcode

Tel. (landline)

Tel. (mobile)

Email

GIFT AID

giftaid it

Increase the value of your donation at no cost to you. For every £1 you give us, we can claim 25p from HM Revenue & Customs, if you are a UK taxpayer.

Please treat this donation as Gift Aid.

I confirm I am a UK tax payer and I have paid or will pay an amount of income tax and/or capital gains tax for each year (6 April to 5 April) that is at least equal to the amount of tax that all the charities that I donate to will reclaim on my gifts for that tax year, (which is 25p for every £1 I give). I understand that if I pay less Income Tax and/or Capital Gains Tax than the amount of Gift Aid claimed on all my donations in that tax year it is my responsibility to pay any difference. Remember to notify us if you no longer pay sufficient tax or change your address.

Signature

Date

DATA PROTECTION

We would love to keep in touch with you about our news, activities and fundraising appeals. You can opt out or update your preferences at any time. If you are happy for us to include you in our database for these purposes, please indicate which methods you are happy for us to use to contact you:

Post Email Phone SMS

Thank you

PLEASE RETURN THIS FORM TO:

Gainsborough's House
46 Gainsborough Street
Sudbury
Suffolk CO10 2EU

01787 372958
mail@gainsborough.org
www.gainsborough.org

Registered charity: 1170048
Registered company: 10413978

BUY A BRICK DONATION FORM

I would like to donate to Gainsborough's House *Buy A Brick Campaign*.

Number of bricks at £20 each:

Total of donation:

We will keep a record of all those who have donated towards the *Buy A Brick Campaign* in a commemorative book at Gainsborough's House.

Please record here clearly using capital letters how you would like your name to appear in the book. If it's a gift and you would like another person's name used, please include it here:

.....

.....

.....

.....

Please tick if you prefer not to be listed in the book at all and wish to remain anonymous.

METHODS OF DONATING

Please tick your chosen method:

- Cheque**
Payable to Gainsborough's House Society
- Bank transfer**
To our CAF Bank account
Account name: Gainsborough's House Society
Account no. 00016264
Sort Code 40-52-40

Please use your name and 'Brick' as reference
- Online via MyDonate**
<http://mydonate.bt.com/events/brickdonation>
or follow the link to MyDonate on the events page of our website – www.gainsborough.org
- Credit/debit card**
Please phone us on 01787 372958
- Cash**

Please complete your details and Gift Aid overleaf.

BRICK
BUYA

CRINKLE-CRANKLE: DISTINCTIVE IN SUFFOLK

Crinkle and crankle means zig-zag in Old English. Suffolk has more than 50 crinkle-crankle walls, twice as many as in the whole of the rest of the country. In the 18th century, the term began to be applied to wavy walls. Such walls were usually aligned east-west so that one side faced south to catch the warming sun for growing fruit. The garden at Gainsborough's House is predominantly a fruit garden, with medlar, quince and Mulberry trees.

The crinkle-crankle wall economises on bricks, despite its sinuous configuration, as it can be made just one brick thick. If a wall this thin was to be made in a straight line, without buttresses, it would easily topple over. The alternate convex and concave curves in the wall provide stability and help it to resist lateral forces.





A PROJECT WITH SOCIAL IMPACT

At the heart of developing a national centre for Gainsborough, we seek to create opportunities to make a real difference to people. After a successful pilot project at HMP Hollesley Bay, we are planning to involve prisoners in making the bricks and building the wall. We hope to broaden our work to involve HMP Highpoint. At the end of the course, those prisoners aged 18–25 will have the opportunity to complete an Arts Council England accredited Bronze Arts Award, developing not just vocational and heritage craft skills, but also literacy and maths skills.



Gainsborough's House

46 Gainsborough Street
Sudbury
Suffolk CO10 2EU

Telephone 01787 372958

mail@gainsborough.org

www.gainsborough.org



@GH_Sudbury

Registered charity: 1170048

Registered company: 10413978



LOTTERY FUNDED